



South Carolina Broadband Infrastructure Program

Areas of Need with Program and Priority Targets

Aug. 3, 2020

Speed Tiers (download / upload)

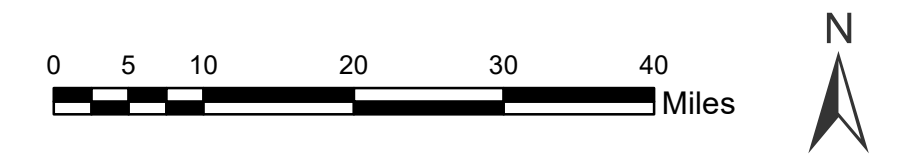
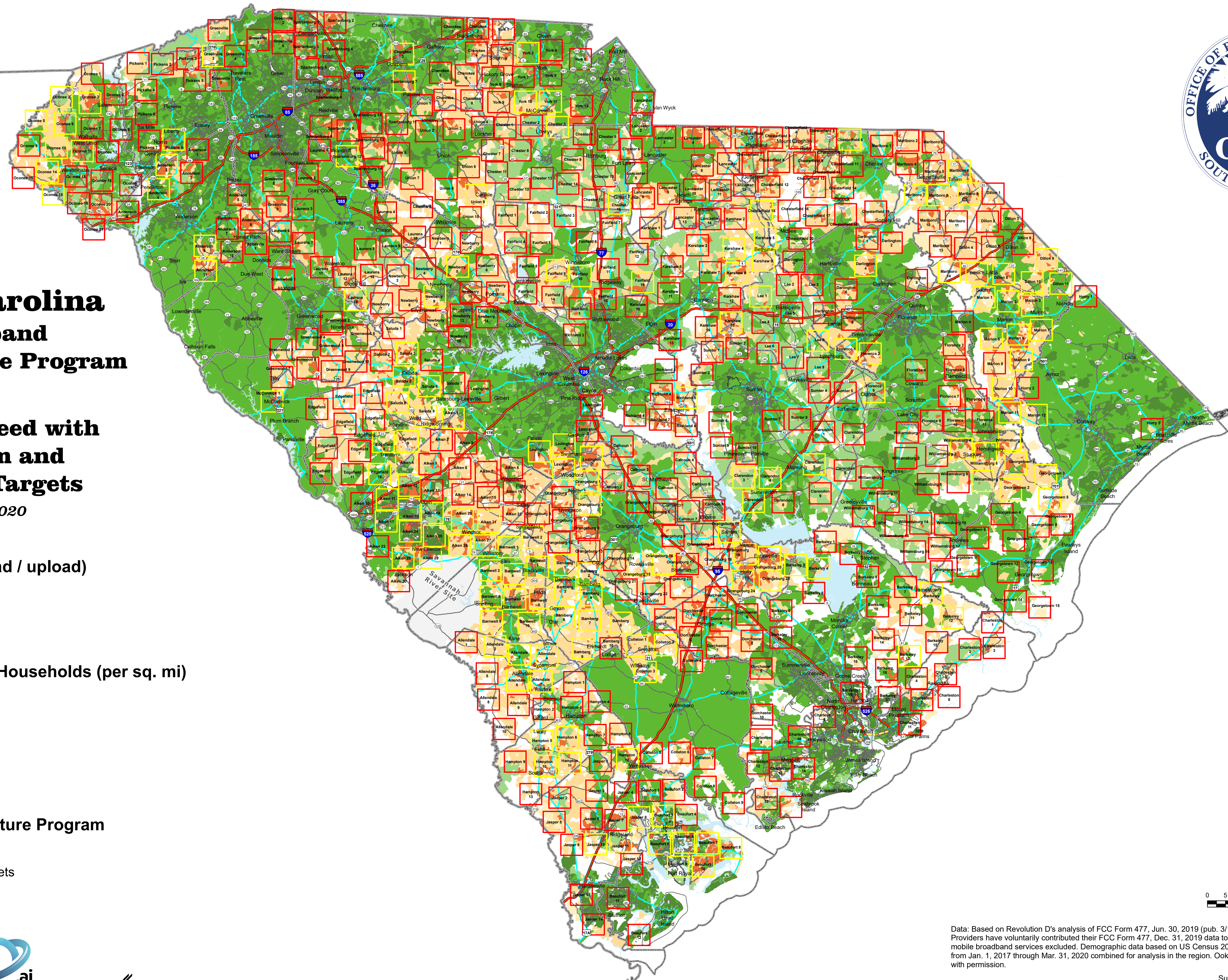
- 300 Mbps / 10 Mbps
- 100 Mbps / 3 Mbps
- 25 Mbps / 3 Mbps

Density of Unserved Households (per sq. mi)

- 200 or More
- 25 - 199
- 1 - 24
- > 0 and < 1
- Zero Households

Broadband Infrastructure Program

- Program Targets
- Priority Program Targets



Data: Based on Revolution D's analysis of FCC Form 477, Jun. 30, 2019 (pub. 3/12/2020). In addition, multiple Internet Service Providers have voluntarily contributed their FCC Form 477, Dec. 31, 2019 data to augment and update the base dataset. Satellite and mobile broadband services excluded. Demographic data based on US Census 2010 information. Finally, Speedtest Intelligence® data from Jan. 1, 2017 through Mar. 31, 2020 combined for analysis in the region. Ookla® trademarks used under license and reprinted with permission.